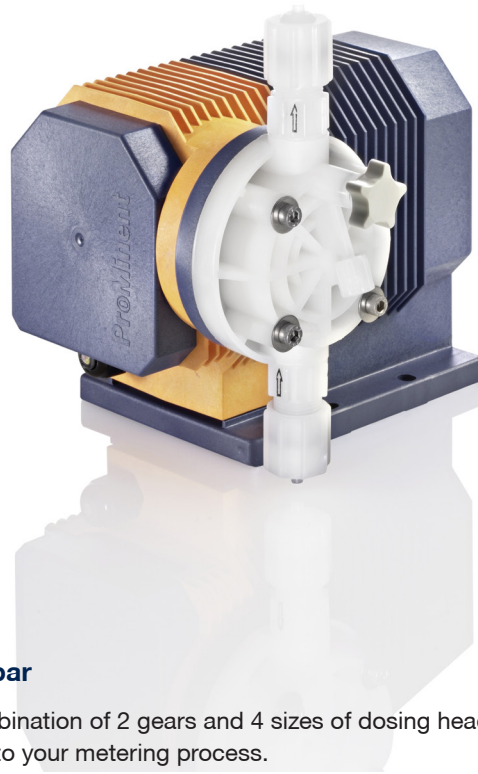


Motor-Driven Metering Pump alpha

The cost-effective solution for simple applications in the lower performance range

ProMinent®



Capacity range 1.0 – 30.6 l/h, 10 – 2 bar

Various pump types are available as a combination of 2 gears and 4 sizes of dosing head in materials PVDF and clear acrylic/PVC, enabling you to match the pump perfectly to your metering process.

Your benefits

- Precise metering and good suction capacity by soft controlled suction and compression strokes
- Tough plastic housing – shock-proof and chemicalresistant
- Suitable for higher viscosity media, thanks to spring-loaded valves
- Low-noise operation

Field of application

- All low capacity applications where constant metering is required.



Motor-Driven Metering Pump alpha

The cost-effective solution for simple applications in the lower performance range

Technical Data

Pump Type	Delivery rate at max. back pressure			Delivery rate at max. back pressure			Stroke rate	Stroke length	Connection size ø O x i Ø	Suction lift	Shipping weight
	bar	l/h	ml/stroke	bar	l/h	ml/stroke					
50 Hz version											
ALPc 1001	10	1.0	0.29	5	1.1	0.32	30	2	6 x 4	5.1	3.0
ALPc 1002	10	1.8	0.52	5	2.1	0.60	58	2	6 x 4	5.1	3.0
ALPc 1004	10	3.5	1.01	5	3.9	1.12	58	3	8 x 5	5.1	3.0
ALPc 1008	10	7.7	1.00	5	8.6	1.12	128	3	8 x 5	5.1	3.0
ALPc 0707	7	6.9	1.98	3	7.7	2.21	58	3	8 x 5	4.1	3.0
ALPc 0417	4	17.0	2.51	2	18.3	2.76	128	3	8 x 5	4.1	3.0
ALPc 0230	2	30.6	3.98	1	32.7	4.26	128	3	12 x 9	3.1	3.0
60 Hz version											
ALPc 1001	10	1.2	0.29	5	1.3	0.31	36	2	6 x 4	5.1	3.0
ALPc 1002	10	2.2	0.53	5	2.6	0.63	69	2	6 x 4	5.1	3.0
ALPc 1004	10	4.1	0.99	5	4.7	1.14	69	3	8 x 5	5.1	3.0
ALPc 1008	10	8.9	0.96	5	10.4	1.13	154	3	8 x 5	5.1	3.0
ALPc 0707	7	8.3	2.00	3	9.2	2.22	69	3	8 x 5	4.1	3.0
ALPc 0417	4	20.6	2.45	2	21.9	2.75	154	3	8 x 5	4.1	3.0
ALPc 0230	2	34.4	3.72	1	39.2	4.24	154	3	12 x 9	3.1	3.0

All data refers to water at 20 °C.

Materials in Contact With the Medium

	Liquid end	Suction/discharge connector	Ball seal	Seals	Balls
PPE	Polypropylene	Polypropylene	EPDM	EPDM	Ceramic
PPB	Polypropylene	Polypropylene	FKM	FKM	Ceramic
NPE	Acrylic glass	PVC	EPDM	EPDM	Ceramic
NPB	Acrylic glass	PVC	FKM	FKM	Ceramic
PVT	PVDF	PVDF	PVDF	PTFE	Ceramic

Metering diaphragm with PTFE coating for all types.

FKM = Fluorine Rubber

Motor Data

Type	Split pole motor with integrated thermal overload protection
Electrical connection	220-240 V, 50/60 Hz (version A)
Power	50 W (at 230 V/50 Hz)
Power consumption	0.4 A (at 230 V/50 Hz)

Warranty :The warranties listed under “General Terms and Conditions of Sale” apply, although there is a warranty period of 12 months for the alpha pump drive.

SYDNEY OFFICE

Unit 4, 4 Narabang Way,
BELROSE NSW 2085
P 02 9450 0995
sales@prominentfluid.com.au

QUEENSLAND OFFICE

Unit 1, 68 Murdoch Circuit,
ACACIA RIDGE QLD 4110
P 07 3213 1900
pfcqld@prominentfluid.com.au

VICTORIA OFFICE

27 Sierra Circuit
PAKENHAM VIC 3810
P 03 8795 7430
pfcvic@prominentfluid.com.au

WESTERN AUSTRALIA OFFICE

2/158 Francisco Street
BELMONT WA 6104
pfcwa@prominentfluid.com.au