

4.5 Electrode Holders

Electrode Holders - & Filters

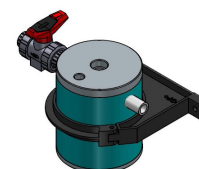
	Part No.
BY-PASS SENSOR HOLDER DLG 2 TYPE for 25mm CLE, CTE etc. and 2 x PG13.5 probe with sight glass, sample valve, mounting bracket, 8 x 5 tube inlet and outlet. Includes 791818. mounting kit for CLE, CTE etc	PA03023238



BY-PASS SENSOR HOLDER DLG 5 High iron, dirty water applications for use with 25mm CLE, CTE etc. Includes 1 x 25 mm port, and 2 x PG13.5 ports for pH and Pt100 sensors (if required), mounting bracket, 8 x 5 tube inlet and 16mm hose outlet, mounting kit 791818. for CLE, CTE etc.	PA03002885
---	-------------------



BY-PASS SENSOR HOLDER DLG 9 For use the the sample flow is unfilled with suspended food fragmentse.g lettuce / salad. For use with the 25mm CLE, CTE etc. Includes 1 x 25mm port for sensor and 1 x PG13.5 ports for pH and PT100 probe (if required), mounting bracket, 2 x 3/4" PVC nipples, 1 x PVC 3/4" ball valve, large drain outlet and nut and mounting kit 791818 for CLE, CTE	PA3003436
---	------------------



ROTAMETER & FLOW SWITCH FOR ABOVE	P86515T
--	----------------

ADD FLOW CONTROL MARIC 33 L/HR ASSEMBLY (NOT REQ'D FOR POOLS)	
20x1.5 F to 15mm Solvent Weld - including MARIC insert assembly	PA27002656
20x1.5 M to 20x1.5 F - including MARIC insert assembly	PA27002657
20x1.5 F to 1/2" BSPT M - including MARIC insert assembly	PA27002805



Note: If using a Maric Valve you MUST use an in-line filter.
The following Filter Assemblies can be used for Pool and Industrial, and can be used in conjunction with all of our Sensor Holders and Flow switch.

- Max. working pressure 10 bar
- Element 316 Stainless Steel 27 dia x 69
- Filter size 80 mesh
- Bowl transparent nylon
- 1/2" BSP threads
- Filtering capacity 55 l/m at .5 bar
- Body fibreglass reinforced polypropylene
- Viton gaskets

	Part No.
Filter only	3240T0235
Filter with 8x5 to 20x1.5F Kit	P3240T0235-A
Filter with 8x5 to 20x1.5F with Maric Kit	P3240T0235-B
Filter with 8x5 to 8x5 Kit	P3240T0235-C
Fitted with 1/4" BSPF to 20x1.5F + DGMa adaptor for connection direct to DGMa	P3240T0235-D
Filter Arag Inox 80 Mesh Element	3240035.030



Note: Systems require valve at sample take-off point, **BR-B/V-TEE-MXF-15**
Note: See also ProMinent DGMa units in **section 6.0 'Yellow Pages'**.

