

Kabellängen sind ca. je 10m
Cable length approx. 10 mtrs. each

φ10.2

DF

L6 ±3

"X1-3/4"

"X4-1/2"

"X4-3/4"

L2

L1

L5 ±3

L7

L4 ±3

DF

DR

L1

L2

L3

L4

L5

L6

L7

LA

ØDF

ØDR

H

B1

B2

Flansch/flange
DIN 2576 PN 10

DN100x114.3

DN150x168.3

DN200x219.1

DN250x273

DN250x273

DN250x273

DN300x323.9

DF

DR

H

B1

B2

Flansch/flange
DIN 2576 PN 10

DN100x114.3

DN150x168.3

DN200x219.1

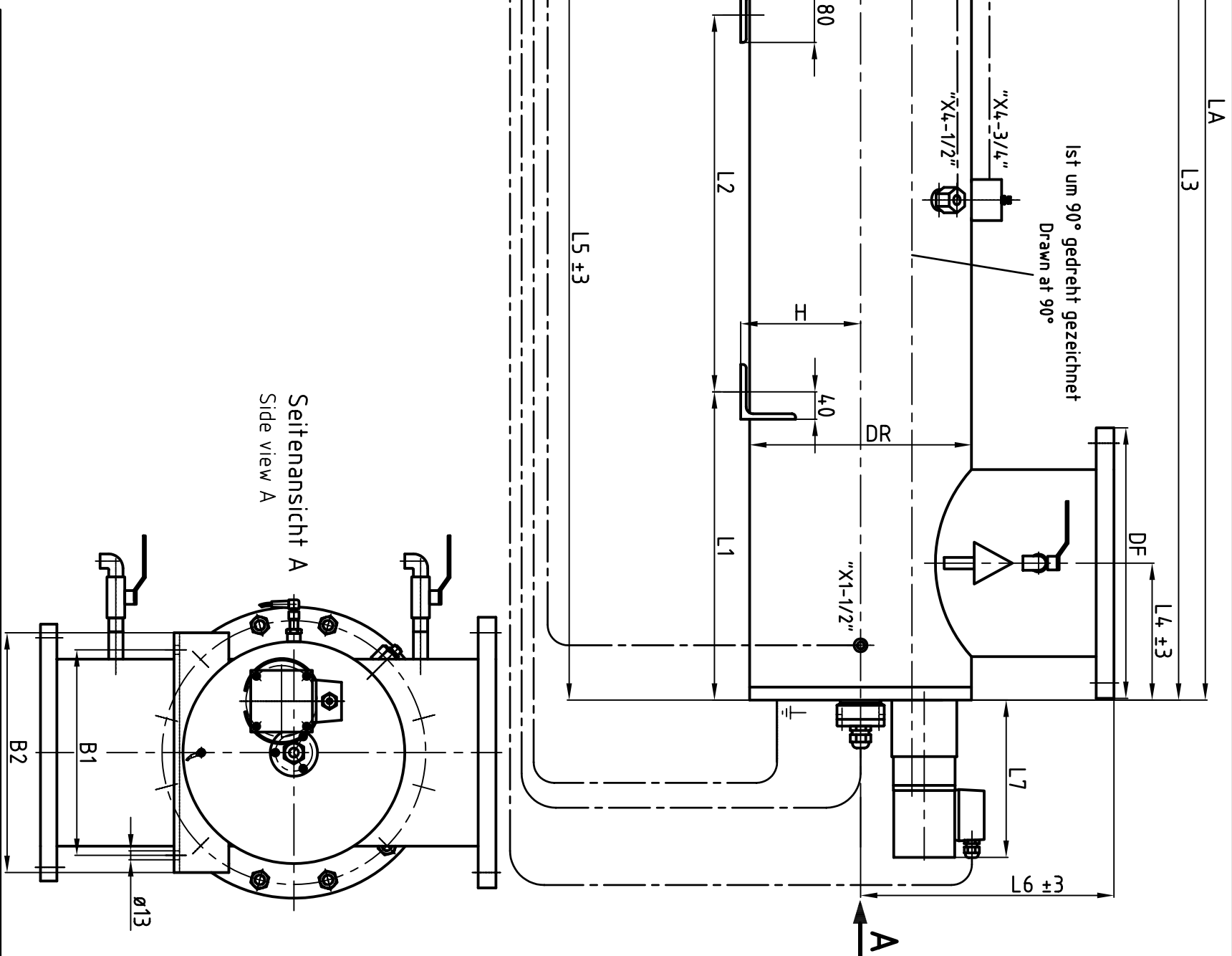
DN250x273

DN250x273

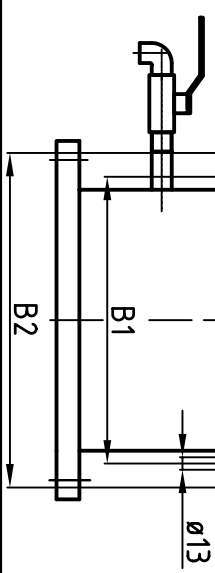
DN250x273

DN300x323.9

Typ/ type	L1 (mm)	L2 (mm)	L3 (mm)	L4 (mm)	L5 (mm)	L6 (mm)	L7 (mm)	LA (mm)	ØDF (mm)	ØDR (mm)	H (mm)	B1 (mm)	B2 (mm)	Flansch/flange DIN 2576 PN 10
1x2ML/22/DN100	-	-	850	130	690	250	250	1750	220	219.1	-	-	-	DN100x114.3
1x3ML/22/DN150	120	350	850	145	665	250	250	1750	220	219.1	125	200	230	DN150x168.3
1x4ML/27/DN200	-	-	1200	175	990	325	240	2450	340	273	-	-	-	DN200x219.1
1x6ML/32/DN250	250	450	1200	200	950	370	240	2450	395	323.9	175	300	350	DN250x273
1x8ML/32/DN250	350	630	1500	200	1250	370	240	3050	395	323.9	175	300	350	DN250x273
1x10ML/32/DN250	350	630	1500	200	1250	370	240	3050	395	323.9	175	300	350	DN250x273
1x10ML/40/DN300	350	630	1500	225	1225	400	240	3050	445	406.4	215	300	350	DN300x323.9



Seitenansicht A
Side view A



Zust.	Anderung	Datum	Name	Urspr.
00	01020	13.01.01	WH	
01	01020	20.03.01	WH	
02	01020	12.06.01	WH	
03	01020	10.08.01	WH	
04	05010/001	16.03.05	WH	

(Allg. Tol.) DIN ISO	(Oberfl.) DIN ISO	Name	Datum
		Herrmann	13.03.2001
		Weibler	13.08.2001

Bezeichnung/description	Material	Werkstoff	Maßstab scale 1:8	AutoCAD	T.-Nr. P.-No.
Dulcodes Powerline UVML 2-10KW					
Massblatt / dimension sheet					

Zchn.-Nr./drawing no. **87_01-401_00_14-73**

Ers. f.: **87_01-401_00_14-73**

Ers. d.: **87_01-401_00_14-73**

Blatt **87_01-401_00_14-73**